

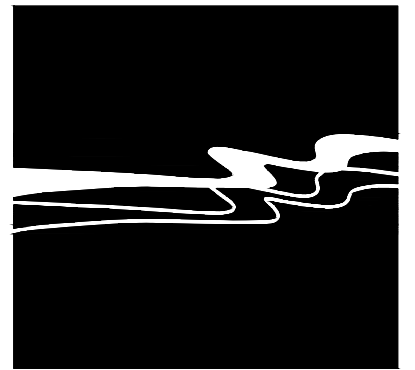
# SAN LAWRENCE TERRACE WELL BLENDING PIPELINE

SAN MIGUEL COMMUNITY SERVICES DISTRICT  
SAN MIGUEL, CA

## PROJECT DESCRIPTION

THE PROJECT INCLUDES CONSTRUCTION OF APPROXIMATELY 620 LF OF NEW 8" HDPE POTABLE WATER MAIN, EXTENDING FROM THE EXISTING SAN LAWRENCE TERRACE (SLT) WELL SITE, TO THE EXISTING 50,000 GALLON TANK, TIE-IN OF THE NEW WATER MAIN TO THE EXISTING 4" SLT WELL PUMP DISCHARGE, ABANDONMENT OF THE EXISTING 4" SLT WELL FEED LINE TO THE DISTRIBUTION SYSTEM, PROVIDING A SERVICE STUB FOR WATER QUALITY SAMPLING AT THE SLT WELL SITE, PENETRATION OF THE EXISTING TANK TO ACCOMMODATE NEW FILL LINE (REDUCED TO 6" STEEL PIPE ABOVE GROUND ATTACHED TO TANK) AND TANK COATING REPAIR IMMEDIATE TO PIPE PENETRATION AND PIPE HANGER INSTALLATION, ASSOCIATED PIPE HANGERS, FITTINGS, COUPLINGS, HYDROSEEDING THE HILLSIDE WHERE PIPELINE IS TO BE INSTALLED, WATER MAIN DISINFECTION AND PRESSURE TESTING, AND OTHER WORK AS REQUIRED TO MAKE THE SLT WELL BLENDING LINE COMPLETE AND OPERATIONAL.

Sheet List Table	
SHEET NUMBER	SHEET TITLE
T-1	TITLE SHEET
T-2	GENERAL NOTES
L-1	PLAN & PROFILE - 1
L-2	PLAN & PROFILE - 2
C-1	DETAILS - 1
C-2	DETAILS - 2
C-3	DETAILS - 3



**WALLACE GROUP®**

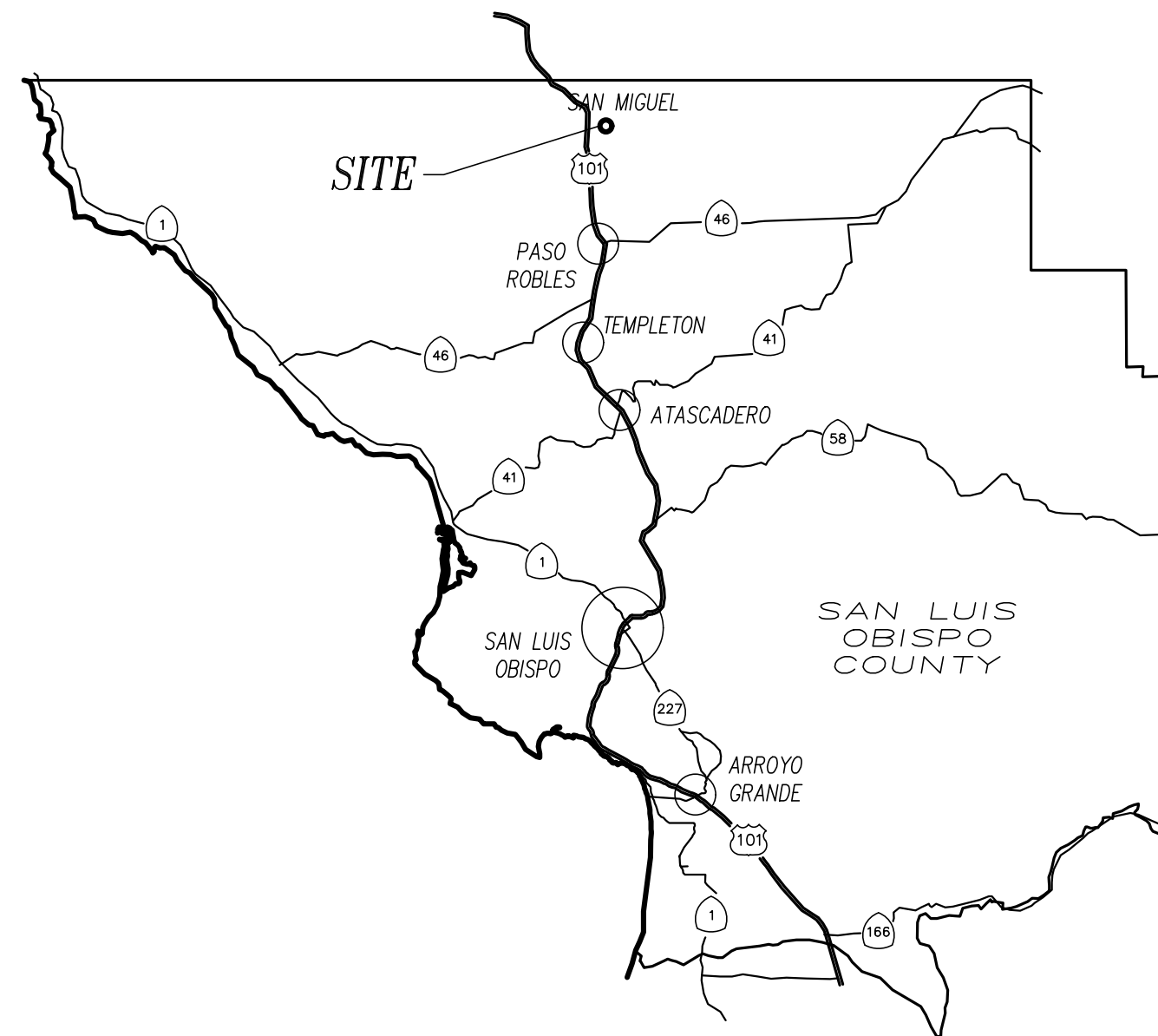
CIVIL AND TRANSPORTATION ENGINEERING  
CONSTRUCTION MANAGEMENT  
LANDSCAPE ARCHITECTURE  
MECHANICAL ENGINEERING  
PLANNING  
PUBLIC WORKS ADMINISTRATION  
SURVEYING / GIS SOLUTIONS  
WATER RESOURCES

612 CLARION COURT  
SAN LUIS OBISPO, CA 93401  
T 805 544-4011 F 805 544-4294  
www.wallacegroup.us

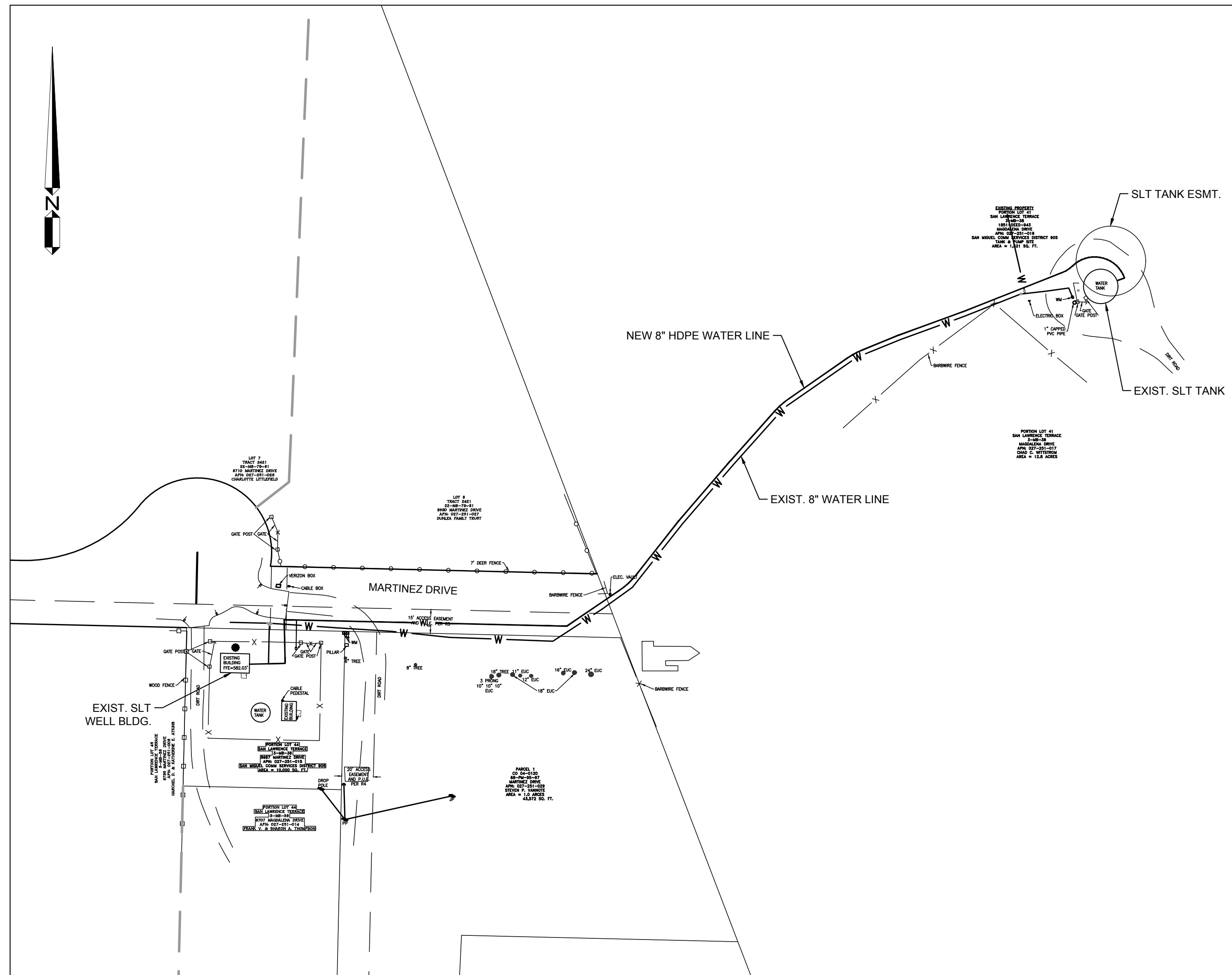


SIGNATURE  
DATE SIGNED

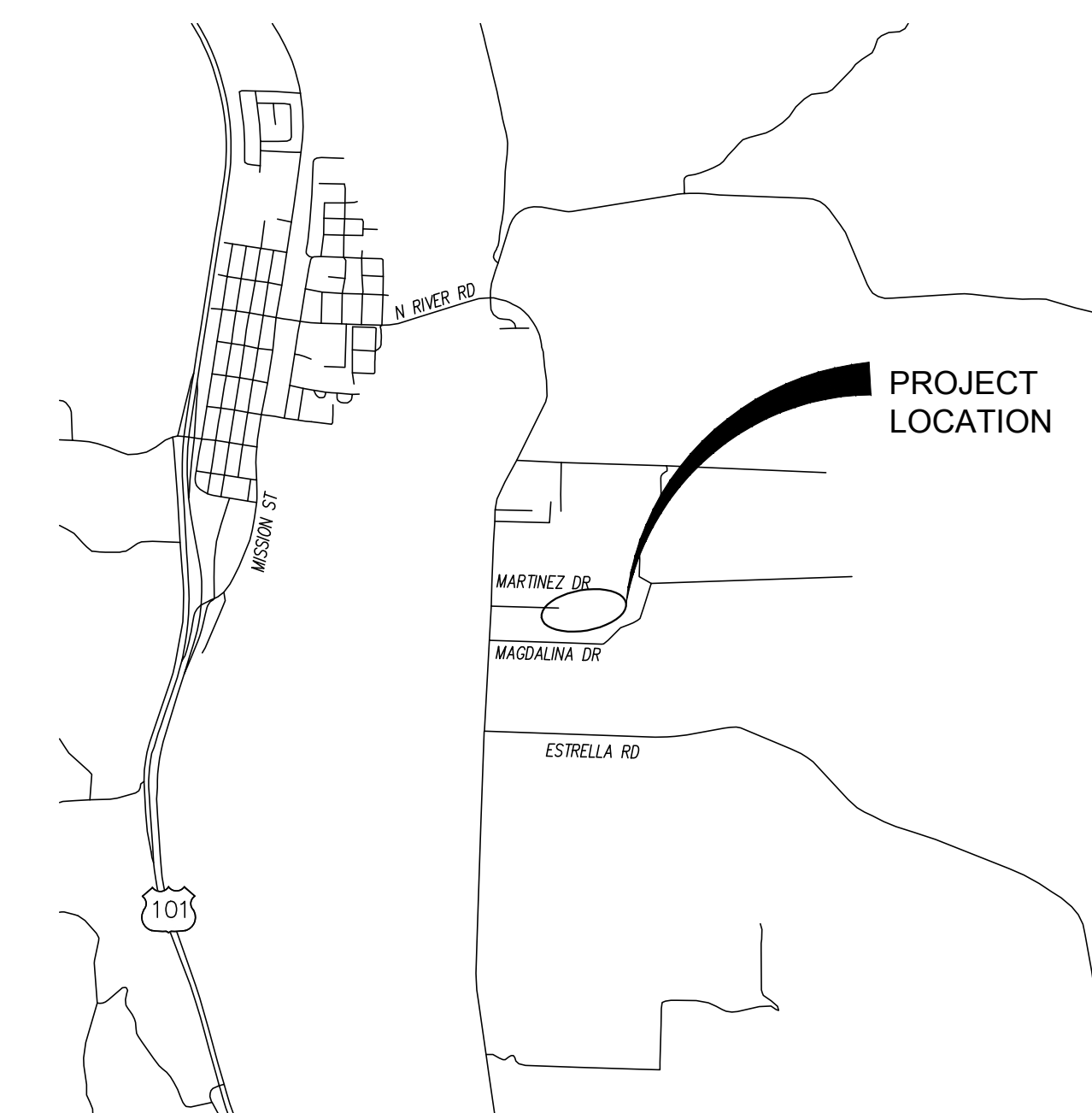
These plans and specifications, and the ideas and design incorporated herein, are instruments of service prepared for the construction of work shown hereon and shall not be used in whole or in part for any other project without written authority of Wallace Group, a California Corporation.  
Copyright © 2017 Wallace Group, a California Corporation. All rights reserved. Copies of this drawing shall have this notice.



VICINITY MAP  
NTS



PROJECT LOCATION MAP  
SCALE: 1" = 50'



LOCATION MAP  
NTS

### UTILITY REPRESENTATIVES

UTILITY	OWNER	PHONE
U.S.A.	UNDERGROUND SERVICE ALERT	811
COMM	FRONTIER COMMUNICATIONS	NOT AVAILABLE
TELEPHONE	PACIFIC BELL	NOT AVAILABLE
ELECTRIC	PACIFIC GAS & ELECTRIC	805-546-5227
GAS	SO CAL GAS TEMPLETON	559-739-2336

### REFERENCE DOCUMENTS

2014 SAN LUIS OBISPO COUNTY DEPARTMENT OF PUBLIC WORKS & TRANSPORTATION PUBLIC IMPROVEMENT STANDARDS.



Know what's below.  
Call before you dig.

SAN MIGUEL CSD CONTACT	PHONE
ROB ROBERSON, INTERIM GENERAL MANAGER KELLY DODDS, UTILITIES SUPERVISOR	805-467-3300
BLAINE REELY, DISTRICT ENGINEER	805-280-1051

### BASIS OF BEARINGS

THE "BASIS OF BEARINGS" FOR THIS MAP AND SURVEY IS GRID NORTH PER CALIFORNIA COORDINATE SYSTEM OF 1983 (CCS 83-ZONE 5). THE MEAN CONVERGENCE ANGLE FOR THIS SITE IS -01°31'31".

MEASURED DISTANCES SHOWN HEREON ARE GRID DISTANCES IN U.S. FEET. TO OBTAIN GROUND DISTANCES, MULTIPLY GRID DISTANCES BY 0.999951326.

### BENCH MARK

TBM = TOP OF A 5/8" REBAR WITH CAP "RCE 18753" (TCS#119) AS SHOWN

ELEVATION = 587.00 FEET (WGS84 - GEOID 03 ORTHOMETRIC HEIGHT PER GPS OBSERVATIONS)

APPROVED BY THE DISTRICT ENGINEER

BLAINE REELY  
DISTRICT ENGINEER

DATE

SAN MIGUEL CSD  
SLT WELL BLENDING PIPELINE  
TITLE SHEET

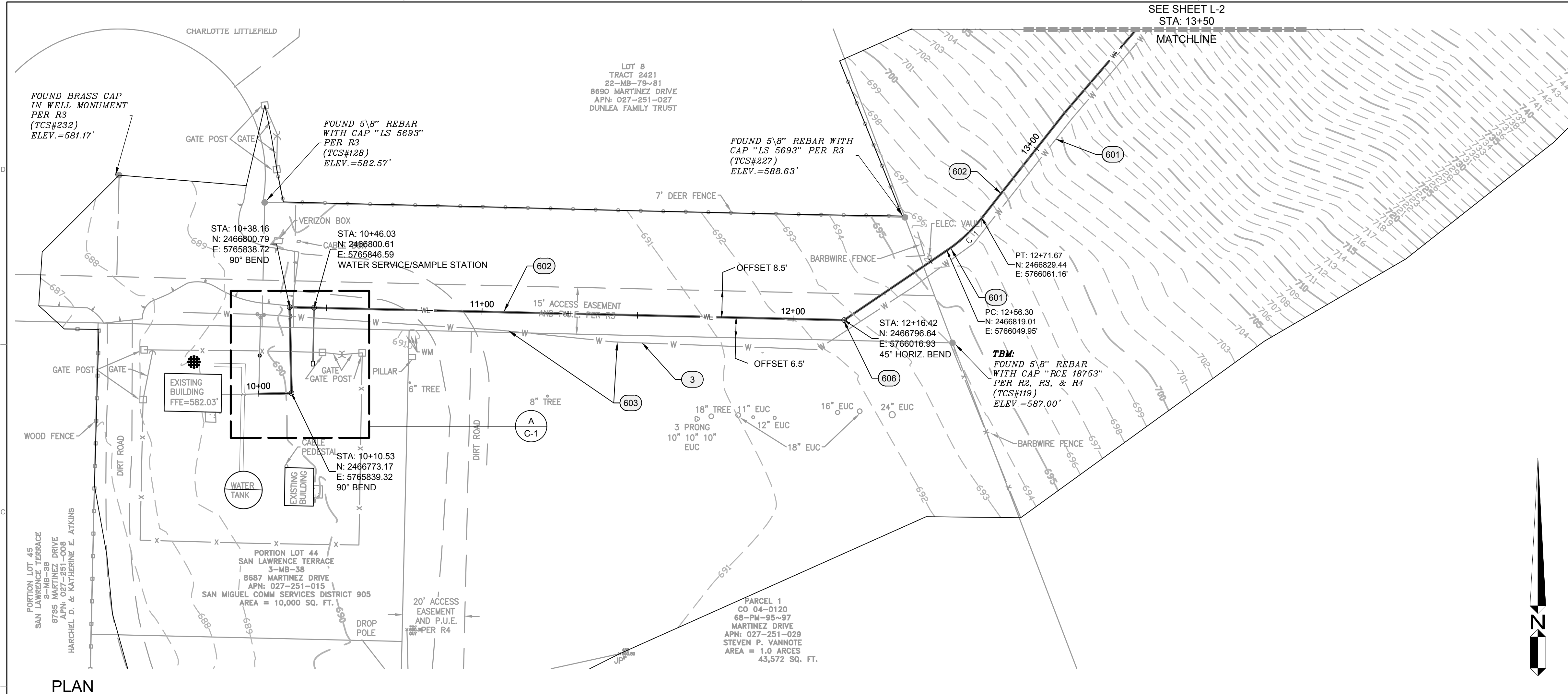
JOB #: 0406-0030  
DESIGNERS: SGT  
DRAWN BY: MJH  
DATE: 02/2017

DRAWING NO.

T-1

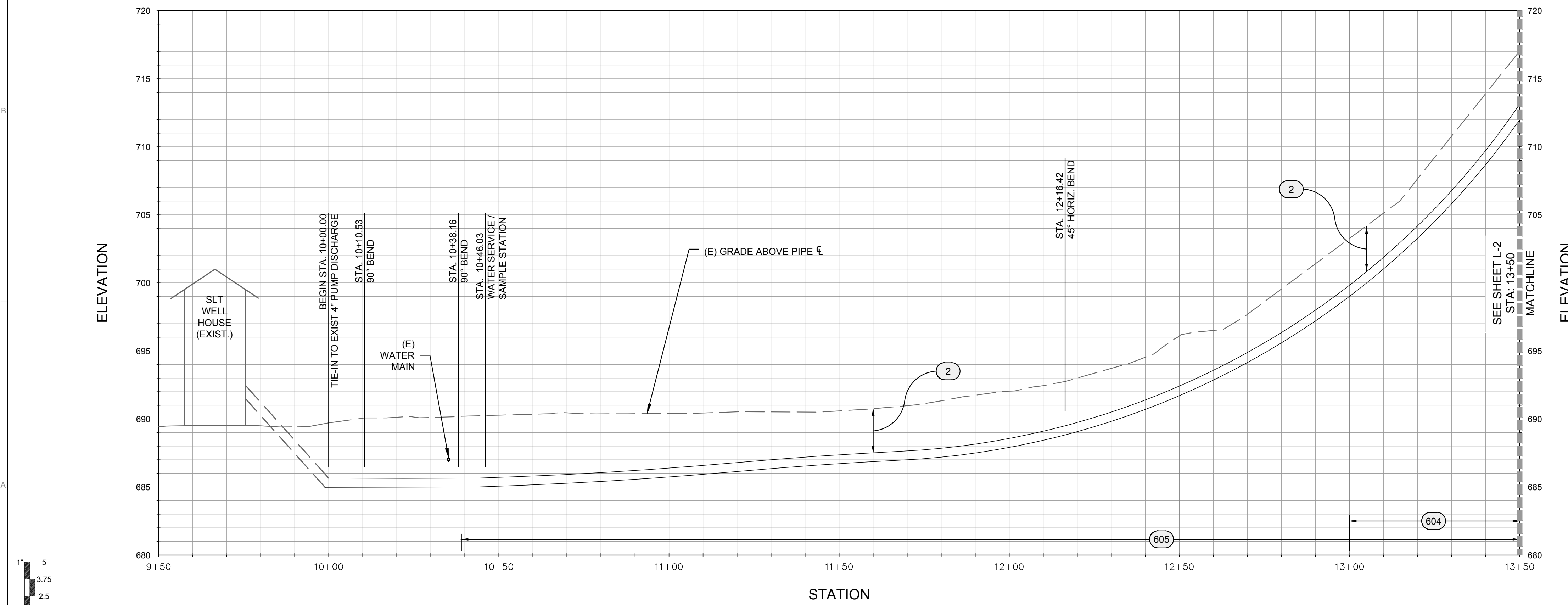
1 OF 7 SHEETS





PLAN

Scale: 1" = 20'

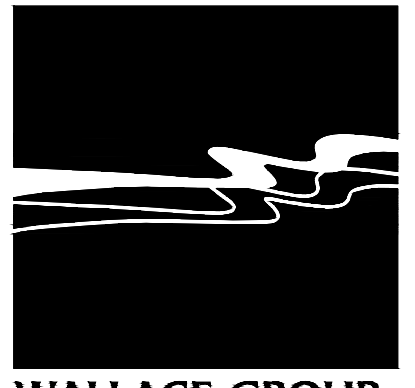


PROFILE

Scale: 1" = 20'

**REFERENCE NOTES:**

NO.	DESCRIPTION
<b>GENERAL</b>	
1	ALL WORK SHALL BE IN ACCORDANCE WITH COUNTY OF SAN LUIS OBISPO PUBLIC WORKS (COUNTY) STANDARDS DATED 2014, UNLESS OTHERWISE SHOWN OR SPECIFIED.
2	UNLESS OTHERWISE SPECIFIED OR SHOWN, NEW WATER MAIN SHALL BE INSTALLED WITH MINIMUM 36 INCHES COVER.
3	EXISTING 6 INCH PVC WATER MAIN SHOWN ON PLANS HAS BEEN FIELD LOCATED/TRACED; HOWEVER, LOCATION SHOWN MAY BE APPROXIMATE. POTHOLE AND VERIFY EXACT LOCATION OF EXISTING WATER MAIN AND PROTECT IN PLACE.
4	TRENCH REQUIREMENTS. IN UN-PAVED AREAS, TRENCH DETAIL PER COUNTY STD. DETAIL U-4a, DETAIL P/SHEET C-3. IN DRIVEWAY/PAVED AREAS (OFF OF MARTINEZ DRIVE), TRENCH DETAIL PER COUNTY STD. DET U-4, DETAIL O/SHEET C-3. TRENCH/PAVEMENT REPAIR PER COUNTY STD. DETAIL R-3 (NO T-CUT OR GRIND AND OVERLAY REQUIRED).
5	CLEARING AND GRUBBING. CLEARING AND GRUBBING ACTIVITIES SHALL CONFORM TO SECTION 16 OF THE 2010 CALTRANS STANDARD SPECIFICATIONS, WITH THE FOLLOWING CLARIFICATION. CLEAR AND GRUB ONLY TO THE EXTENT REQUIRED FOR CONSTRUCTION.
6	FOLLOW DISINFECTION AND PRESSURE TESTING REQUIREMENTS SPECIFIED IN COUNTY DPW STANDARDS, SECTION 6.2.3. SUBMIT PLAN TO OWNER A MINIMUM 3 WORKING DAYS PRIOR TO START OF DISINFECTION AND PRESSURE TESTING, FOR APPROVAL BY OWNER. PRESSURE TEST SHALL BE 200 PSI AT THE HIGHEST POINT OF NEW BURIED PIPELINE (AT WATER TANK SITE). ISOLATION OF WATER MAIN AND TESTING IN SECTIONS IS ALLOWABLE TO MINIMIZE TEST PRESSURE AT THE WELL SITE, PER APPROVED DISINFECTION AND PRESSURE TESTING PLAN.
<b>PIPELINE</b>	
600	NEW 8 INCH HDPE WATER MAIN AND EXISTING 6 INCH WATER MAIN SHALL BE OFFSET MIN. 3 FEET AND MAX. 3.5 FEET, FROM OUTSIDE DIAMETER OF EXISTING AND NEW WATER MAINS, THROUGHOUT ALIGNMENT. SEE GENERAL REFERENCE NOTE 3.
601	8 INCH DIAMETER DR 11 (PRESSURE CLASS 200 PSI) HDPE PRESSURE PIPE, THERMAL BUTT-FUSION WELDED JOINTS. PROVIDE BLUE STRIPE PIPE TO DESIGNATE POTABLE WATER SERVICE. EXCEPT WHERE FITTINGS ARE CALLED OUT, FIT PIPE ALIGNMENT USING PIPE BENDING CAPABILITY. SEE SPEC. SECT. 33 11 00.
602	EXISTING 6 INCH WATER LINE MAY DIVERGE OFF RIGHT OF WAY IN THIS AREA. NEW 8 INCH WATER MAIN SHALL FOLLOW NEW ALIGNMENT SHOWN ON PLANS PARALLEL TO RIGHT OF WAY, WITH SPECIFIED OFFSET SHOWN.
603	TRENCH PLUG PER DETAIL E/SHEET C-1.
604	HYDROSEED WORK AREA DISTURBED BY PIPELINE CONSTRUCTION. HYDROSEED PER SPEC. SECT. 31 25 14
605	45° FITTING



**WALLACE GROUP**  
 CIVIL AND TRANSPORTATION ENGINEERING  
 CONSTRUCTION MANAGEMENT  
 LANDSCAPE ARCHITECTURE  
 MECHANICAL ENGINEERING  
 PLANNING  
 PUBLIC WORKS ADMINISTRATION  
 SURVEYING / GIS SOLUTIONS  
 WATER RESOURCES

612 CLARION COURT  
 SAN LUIS OBISPO, CA 93401  
 T 805 544-4011 F 805 544-4294  
 www.wallacegroup.us



SIGNATURE

DATE SIGNED

These plans and specifications, and the ideas and design incorporated herein, are instruments of service prepared for the construction of work shown hereon and shall not be used in whole or in part for any other project without written authority of Wallace Group, a California Corporation.  
 Copyright © 2017 Wallace Group, a California Corporation. All rights reserved. Copies of this drawing shall have this notice.

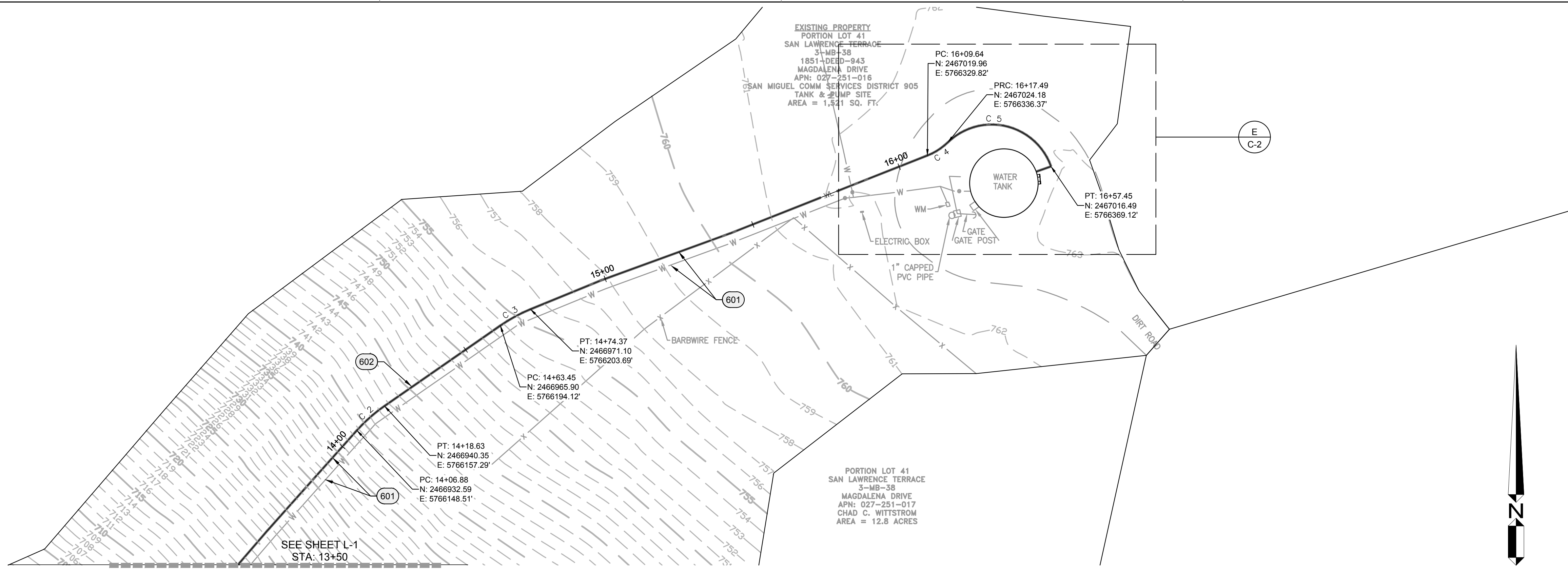
STATION	NORTHING	EASTING	DESCRIPTION
10+10.53	2466773.17	5765839.32	90° DI ELL.
10+38.16	2466800.79	5765838.72	90° DI ELL.
10+46.03	2466800.61	5765846.59	TEE
12+16.42	2466796.64	5766016.93	45° ELL.
12+56.30	2466819.01	5766049.95	PC
12+71.67	2466829.44	5766061.16	PT

Curve #	Radius	Length	Chord Direction	Start Point	End Point
C 1	50.00	15.38	N47° 04' 00.65"E	(5766049.95,2466819.01)	(5766061.16,2466829.44)

SAN MIGUEL CSD  
 SLT WELL BLENDING PIPELINE  
 PLAN & PROFILE - 1

JOB #: 0406-0030  
 DESIGNERS: SGT  
 DRAWN BY: MJH  
 DATE: 02/20/17

DRAWING NO.  
**L-1**  
 3 OF 7 SHEETS

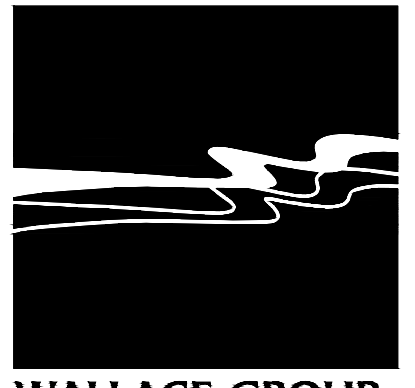


PLAN

Scale: 1" = 20'

**REFERENCE NOTES:**

DESCRIPTION	
<b>GENERAL</b>	
1	ALL WORK SHALL BE IN ACCORDANCE WITH COUNTY OF SAN LUIS OBISPO PUBLIC WORKS (COUNTY) STANDARDS DATED 2014, UNLESS OTHERWISE SHOWN OR SPECIFIED.
2	UNLESS OTHERWISE SPECIFIED OR SHOWN, NEW WATER MAIN SHALL BE INSTALLED WITH MINIMUM 36 INCHES COVER.
3	EXISTING 6 INCH PVC WATER MAIN SHOWN ON PLANS HAS BEEN FIELD LOCATED/TRACED; HOWEVER, LOCATION SHOWN MAY BE APPROXIMATE. POTHOLE AND VERIFY EXACT LOCATION OF EXISTING WATER MAIN AND PROTECT IN PLACE.
4	TRENCH REQUIREMENTS. IN UN-PAVED AREAS, TRENCH DETAIL PER COUNTY STD. DETAIL U-4a, DETAIL P/SHEET C-3. IN DRIVEWAY/PAVED AREAS (OFF OF MARTINEZ DRIVE), TRENCH DETAIL PER COUNTY STD. DET U-4, DETAIL O/SHEET C-3. TRENCH/PAVEMENT REPAIR PER COUNTY STD. DETAIL R-3 (NO T-CUT OR GRIND AND OVERLAY REQUIRED).
5	CLEARING AND GRUBBING. CLEARING AND GRUBBING ACTIVITIES SHALL CONFORM TO SECTION 16 OF THE 2010 CALTRANS STANDARD SPECIFICATIONS, WITH THE FOLLOWING CLARIFICATION. CLEAR AND GRUB ONLY TO THE EXTENT REQUIRED FOR CONSTRUCTION.
6	FOLLOW DISINFECTION AND PRESSURE TESTING REQUIREMENTS SPECIFIED IN COUNTY DPW STANDARDS, SECTION 6.2.3. SUBMIT PLAN TO OWNER A MINIMUM 3 WORKING DAYS PRIOR TO START OF DISINFECTION AND PRESSURE TESTING, FOR APPROVAL BY OWNER. PRESSURE TEST SHALL BE 200 PSI AT THE HIGHEST POINT OF NEW BURIED PIPELINE (AT WATER TANK SITE). ISOLATION OF WATER MAIN AND TESTING IN SECTIONS IS ALLOWABLE TO MINIMIZE TEST PRESSURE AT THE WELL SITE, PER APPROVED DISINFECTION AND PRESSURE TESTING PLAN.
<b>PIPELINE</b>	
600	NEW 8 INCH HDPE WATER MAIN AND EXISTING 6 INCH WATER MAIN SHALL BE OFFSET MIN. 3 FEET AND MAX. 3.5 FEET, FROM OUTSIDE DIAMETER OF EXISTING AND NEW WATER MAINS, THROUGHOUT ALIGNMENT. SEE GENERAL REFERENCE NOTE 3.
601	8 INCH DIAMETER DR 11 (PRESSURE CLASS 200 PSI) HDPE PRESSURE PIPE, THERMAL BUTT-FUSION WELDED JOINTS. PROVIDE BLUE STRIPE PIPE TO DESIGNATE POTABLE WATER SERVICE. EXCEPT WHERE FITTINGS ARE CALLED OUT, FIT PIPE ALIGNMENT USING PIPE BENDING CAPABILITY. SEE SPEC. SECT. 33 11 00.
602	EXISTING 6 INCH WATER LINE MAY DIVERGE OFF RIGHT OF WAY IN THIS AREA. NEW 8 INCH WATER MAIN SHALL FOLLOW NEW ALIGNMENT SHOWN ON PLANS PARALLEL TO RIGHT OF WAY, WITH SPECIFIED OFFSET SHOWN.
603	TRENCH PLUG PER DETAIL E/SHEET C-1.
604	HYDROSEED WORK AREA DISTURBED BY PIPELINE CONSTRUCTION. HYDROSEED PER SPEC. SECT. 31 25 14
605	45° FITTING



**WALLACE GROUP®**  
 CIVIL AND TRANSPORTATION ENGINEERING  
 CONSTRUCTION MANAGEMENT  
 LANDSCAPE ARCHITECTURE  
 MECHANICAL ENGINEERING  
 PLANNING  
 PUBLIC WORKS ADMINISTRATION  
 SURVEYING / GIS SOLUTIONS  
 WATER RESOURCES

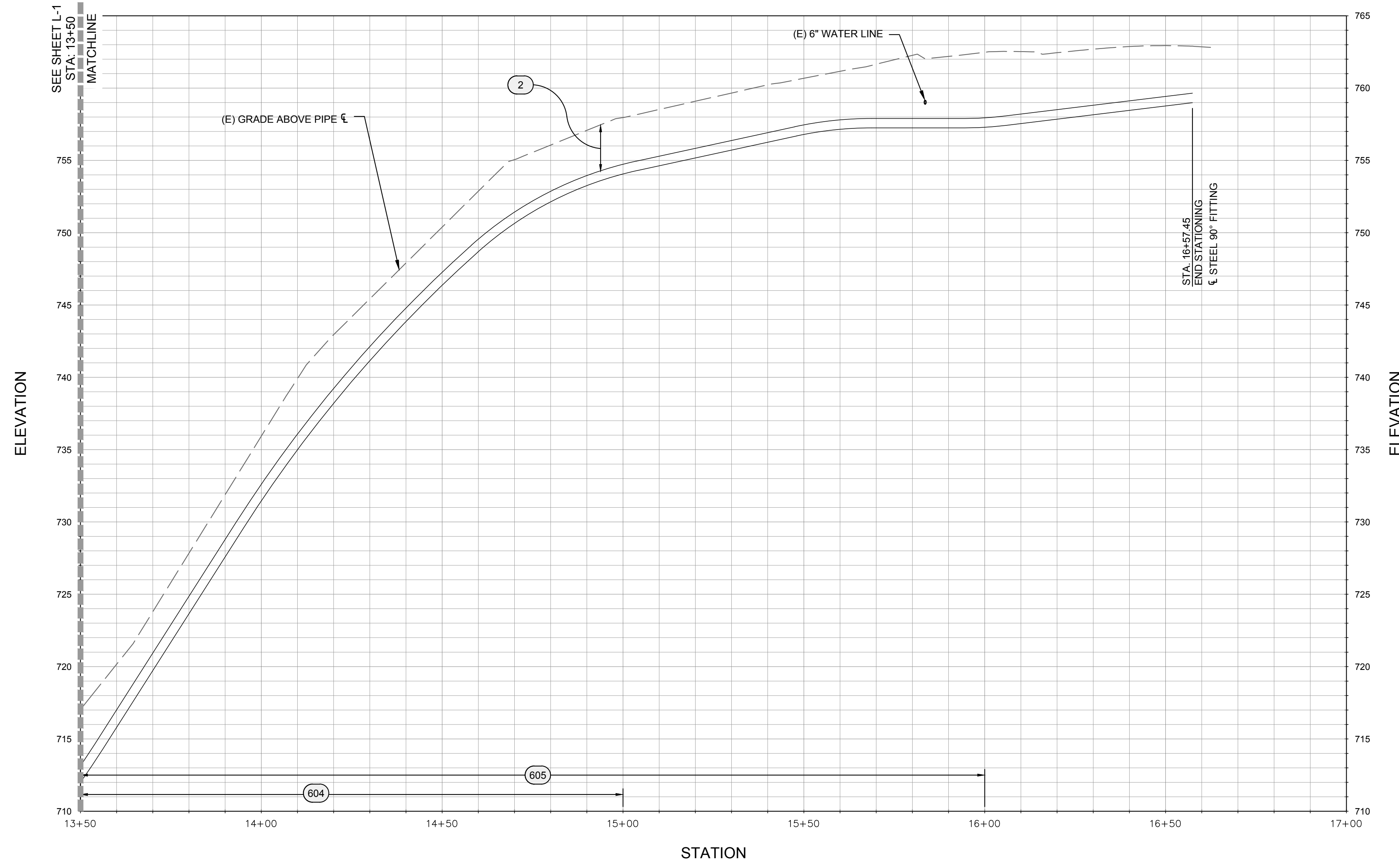
612 CLARION COURT  
 SAN LUIS OBISPO, CA 93401  
 T 805 544-4011 F 805 544-4294  
 www.wallacegroup.us

SIGNATURE

DATE SIGNED

These plans and specifications, and the ideas and design incorporated herein, are instruments of service prepared for the construction of work shown hereon and shall not be used in whole or in part for any other project without written authority of Wallace Group, a California Corporation.

Copyright © 2017 Wallace Group, a California Corporation. All rights reserved. Copies of this drawing shall have this notice.



PROFILE

Scale: 1" = 20'

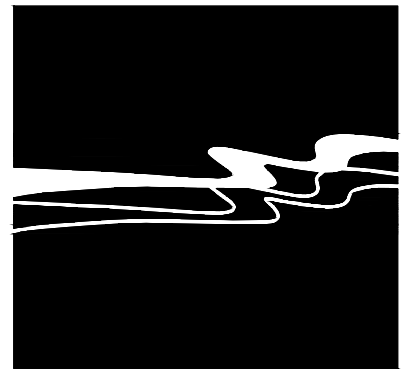
STAKING TABLE			
STATION	NORTHING	EASTING	DESCRIPTION
14+06.88	2466932.59	5766148.51	PC
14+18.63	2466940.35	5766157.29	PT
14+63.45	2466965.90	5766194.12	PC
14+74.37	2466971.10	5766203.69	PT
16+09.64	2467019.96	5766329.82	PC
16+17.49	2467024.18	5766336.37	PRC
16+57.45	2467016.49	5766369.12	PT

Curve Table: Alignments					
Curve #	Radius	Length	Chord Direction	Start Point	End Point
C 2	50.00	11.75	N48° 30' 47.21"E	(5766148.51,2466932.59)	(5766157.29,2466940.35)
C 3	50.00	10.92	N61° 30' 09.30"E	(5766194.12,2466965.90)	(5766203.69,2466971.10)
C 4	20.00	7.85	N57° 12' 43.48"E	(5766329.82,2467019.96)	(5766336.37,2467024.18)
C 5	20.00	39.96	S76° 46' 57.49"E	(5766336.37,2467024.18)	(5766369.12,2467016.49)

SAN MIGUEL CSD  
 SLT WELL BLENDING PIPELINE  
 PLAN & PROFILE - 2

JOB #: 0406-0030  
 DESIGNERS: SGT  
 DRAWN BY: MJH  
 DATE: 02/20/17

DRAWING NO.  
 L-2  
 4 OF 7 SHEETS



**WALLACE GROUP®**  
 CIVIL AND TRANSPORTATION ENGINEERING  
 CONSTRUCTION MANAGEMENT  
 LANDSCAPE ARCHITECTURE  
 MECHANICAL ENGINEERING  
 PLANNING  
 PUBLIC WORKS ADMINISTRATION  
 SURVEYING / GIS SOLUTIONS  
 WATER RESOURCES

612 CLARION COURT  
 SAN LUIS OBISPO, CA 93401  
 T 805 544-4011 F 805 544-4294  
 www.wallacegroup.us

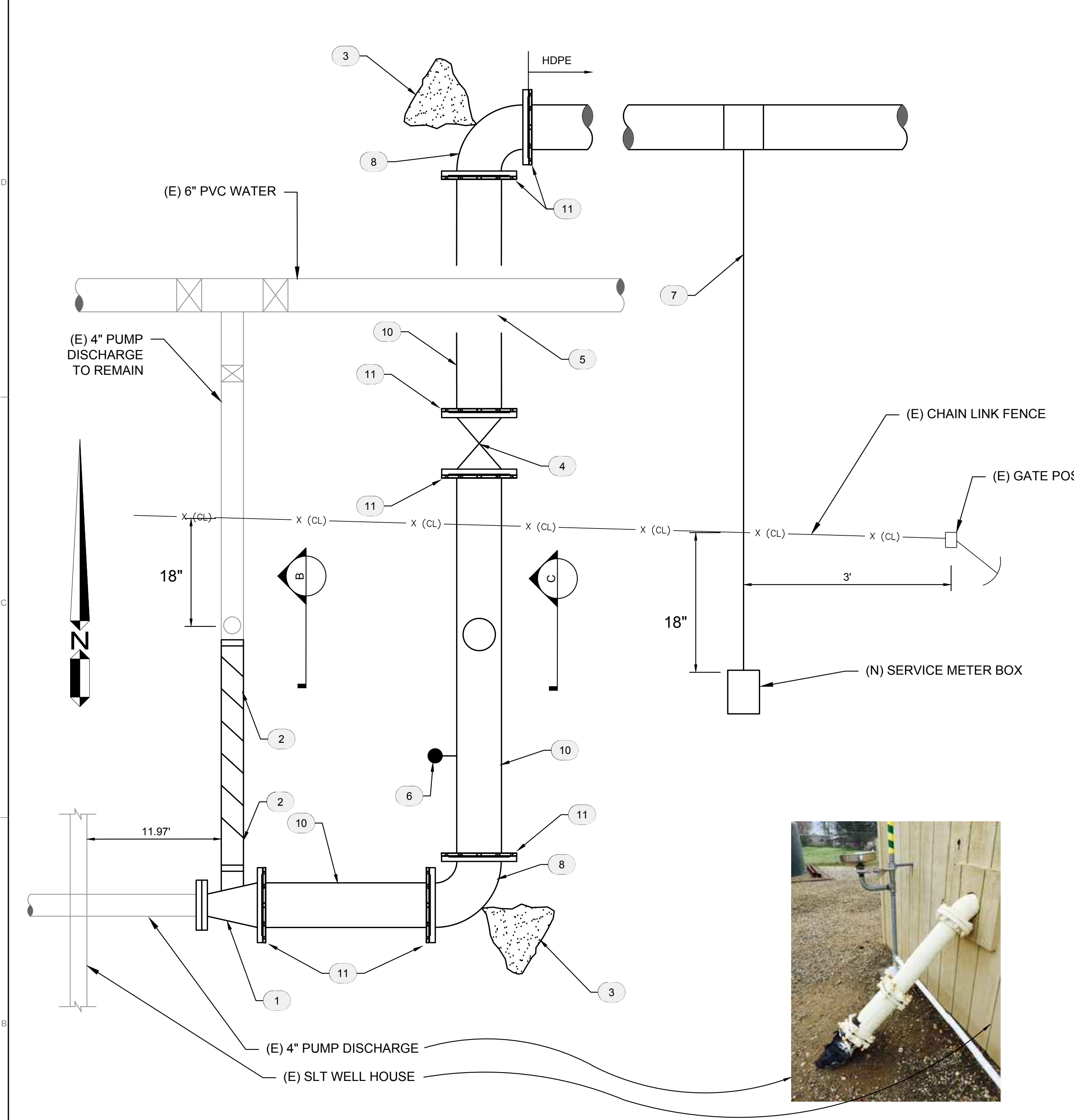


SIGNATURE  
 DATE SIGNED

These plans and specifications, and the ideas and design incorporated herein, are instruments of service prepared for the construction of work shown hereon and shall not be used in whole or in part for any other project without written authority of Wallace Group, a California Corporation.  
 Copyright © 2017 Wallace Group, a California Corporation. All rights reserved. Copies of this drawing shall have this notice.

**SAN MIGUEL CSD**  
**SLT WELL BLENDING PIPELINE**  
**DETAILS - 1**

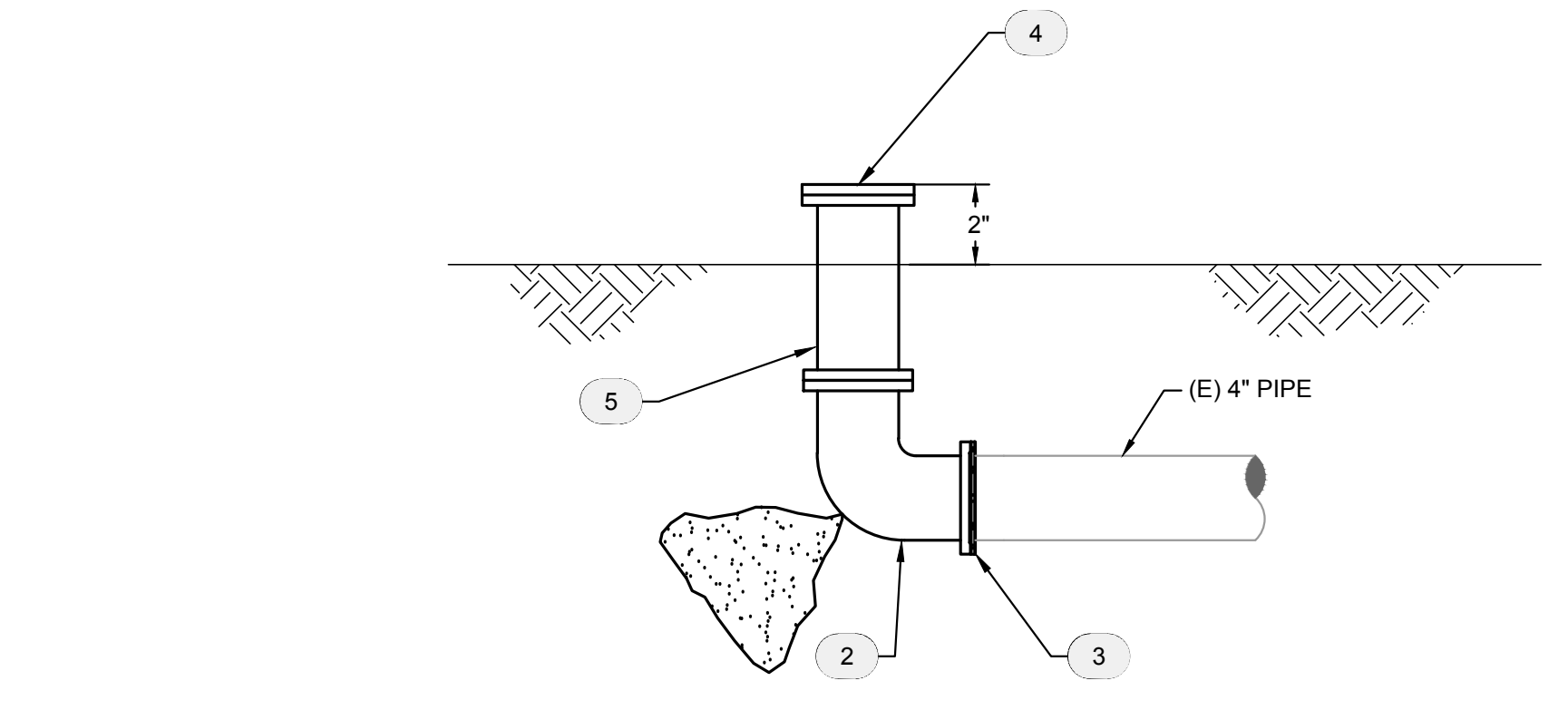
JOB #: 0406-0030  
 DESIGNERS: SGT  
 DRAWN BY: MJH  
 DATE: 02/2017  
**DRAWING NO.**  
**C-1**  
 5 OF 7 SHEETS



**A WELL SITE CONNECTION PLAN**

Scale: NTS

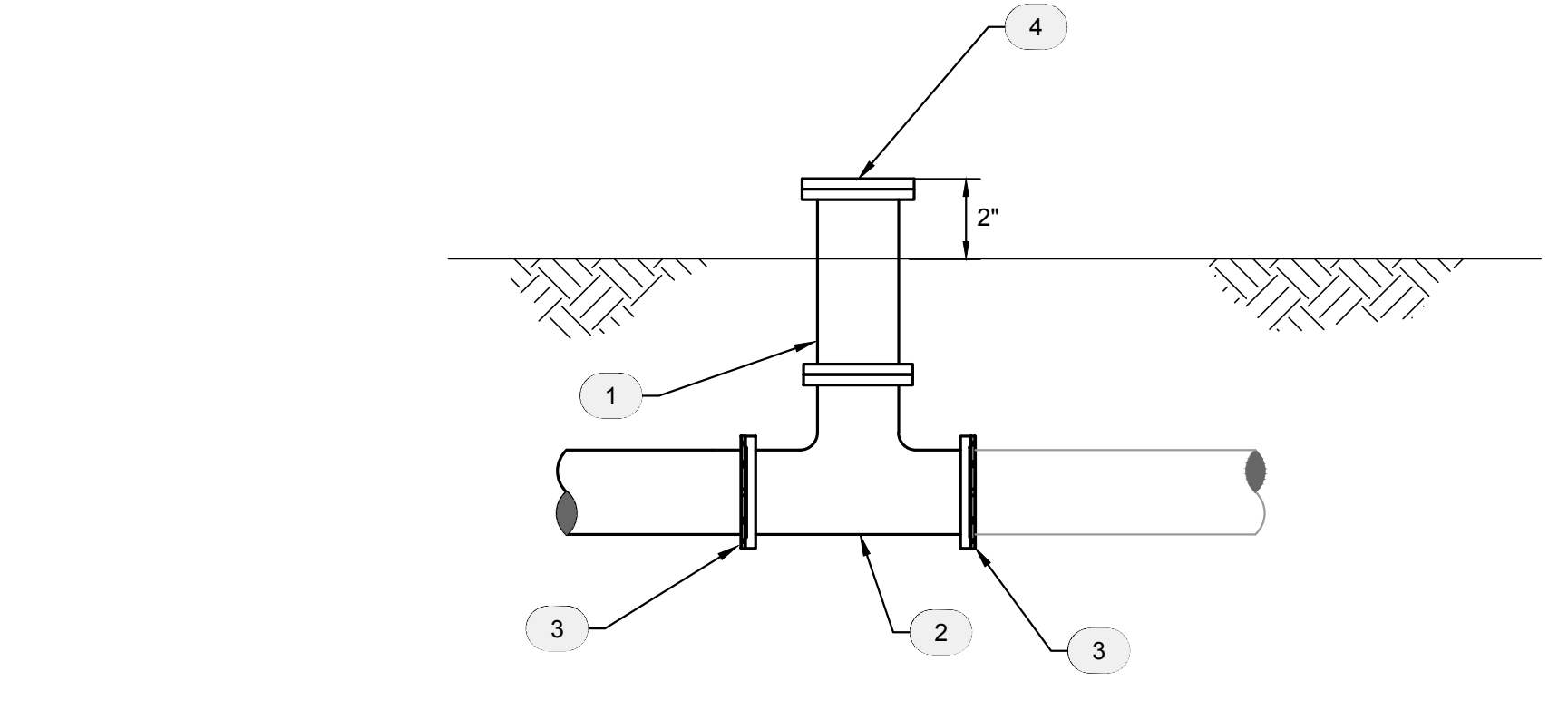
WELL SITE CONNECTION PLAN NOTES:	
1	TIE INTO EXIST. 4" DUCTILE IRON PIPE WITH 4" x 8" REDUCER, FLG x MJ.
2	REMOVE EXIST. 4 INCH WELL FEED LINE WHERE SHOWN.
3	THRUST BLOCK PER COUNTY STD. DETAIL W-1, DETAIL J/SHEET C-3.
4	GATE VALVE PER COUNTY STD. 6.2.1.C.1, MJ x MJ, SIZE PER PLAN, VALVE ANCHOR AND BOX PER COUNTY STD. DETAIL W-3, DETAIL L/SHEET C-3.
5	NEW 8 INCH HDPE PIPELINE TO CLEAR BELOW EXISTING 6 INCH WATER MAIN BY MIN. 12 INCHES, OUTSIDE PIPE WALL TO OUTSIDE PIPE WALL.
6	2 INCH BLOW OFF ASSEMBLY PER COUNTY STD. DETAIL W-5a, DETAIL N/SHEET C-3.
7	1 INCH WATER SERVICE PER COUNTY STD. DETAIL W-4, DETAIL M/SHEET C-3 (NO METER REQUIRED).
8	8" 90° DI ELL, MJ x MJ
9	FLANGED COUPLING ADAPTER
10	8" C900 PVC CL235
11	MJ RESTRAINT, MEGALUG 2000PV SERIES OR APPROVED EQUAL



**B SECTION**

Scale: NTS

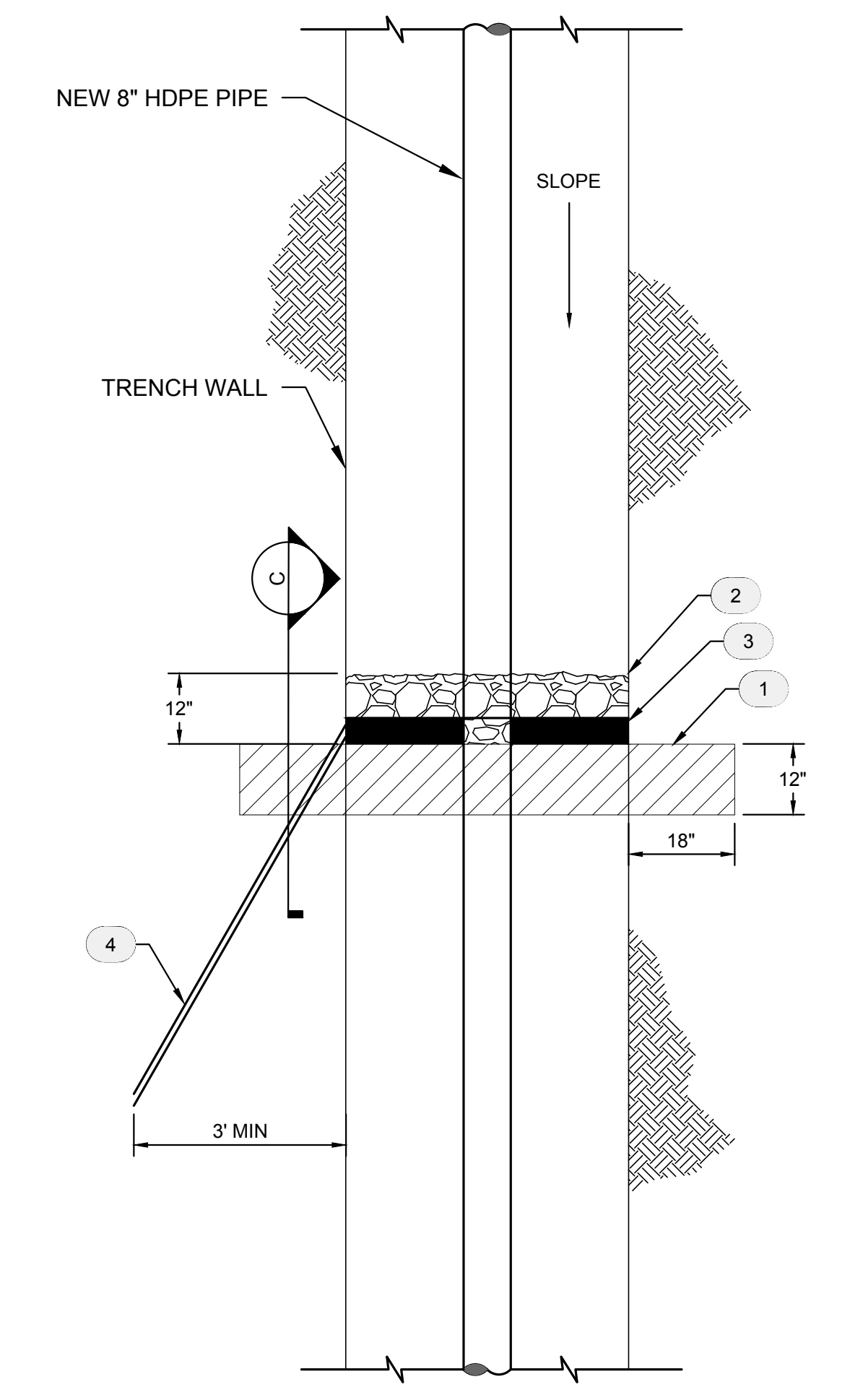
SECTION NOTES:	
1	PIPE SIZE PER PLAN
2	90° ELL, MJ x FLG
3	MJ RESTRAINT, MEGALUG 2000PV SERIES OR APPROVED EQUAL.
4	BLIND FLANGE
5	DIP PIPE SPOOL, STD. ASPH. COATING, CEMENT MORTAR LINED, BURIED PIPE POLYWRAP PER AWWA C105.



**C SECTION**

Scale: NTS

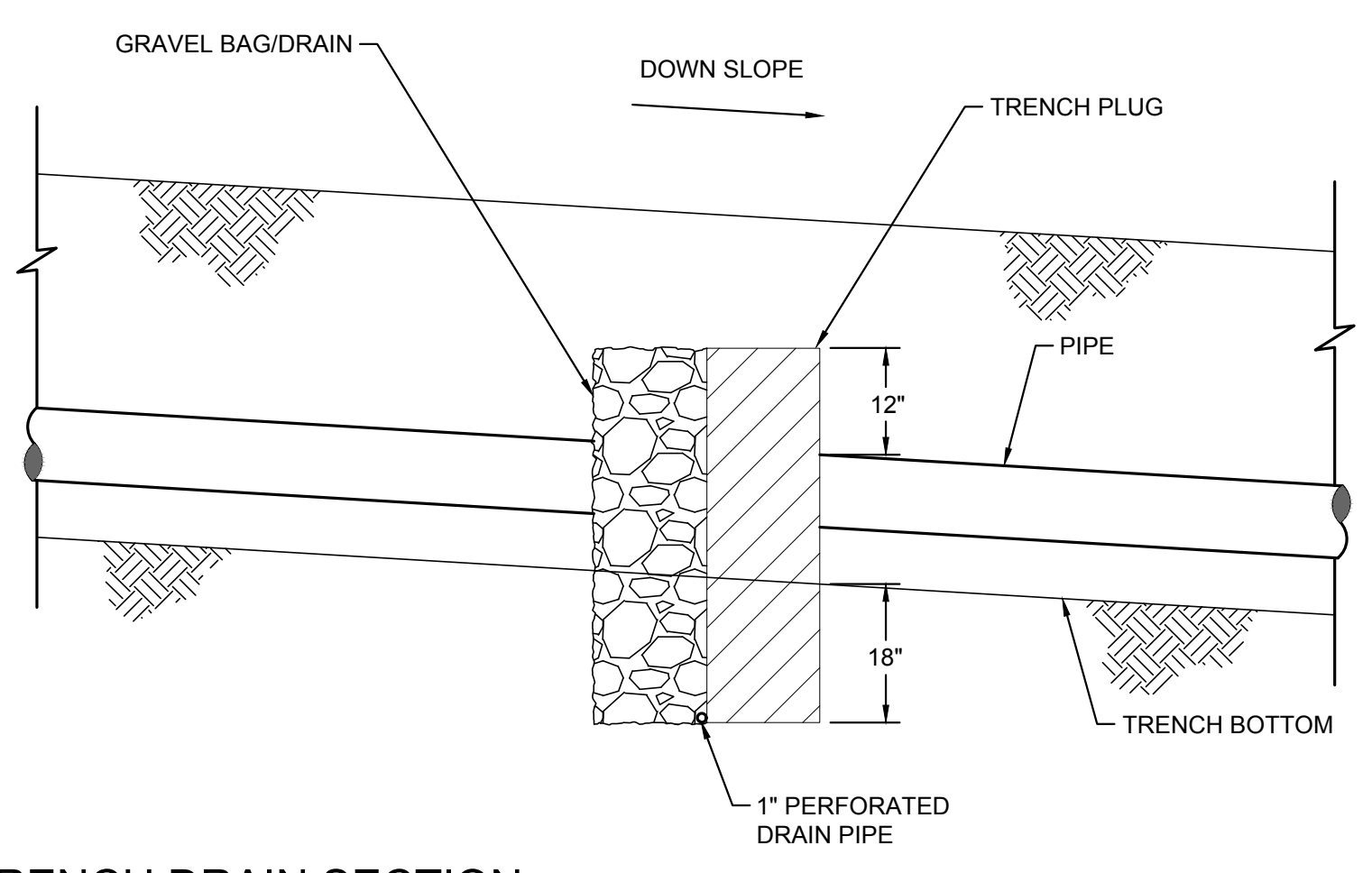
SECTION NOTES:	
1	DIP PIPE SPOOL, STD. ASPH. COATING, CEMENT MORTAR LINED, BURIED PIPE POLYWRAP PER AWWA C105.
2	TEE, MJ x MJ x FLG
3	SEE PLAN NOTE 11, WELL SITE CONNECTION PLAN AT LEFT.
4	BLIND FLANGE



**E TRENCH DRAIN PLUG**

Scale: NTS

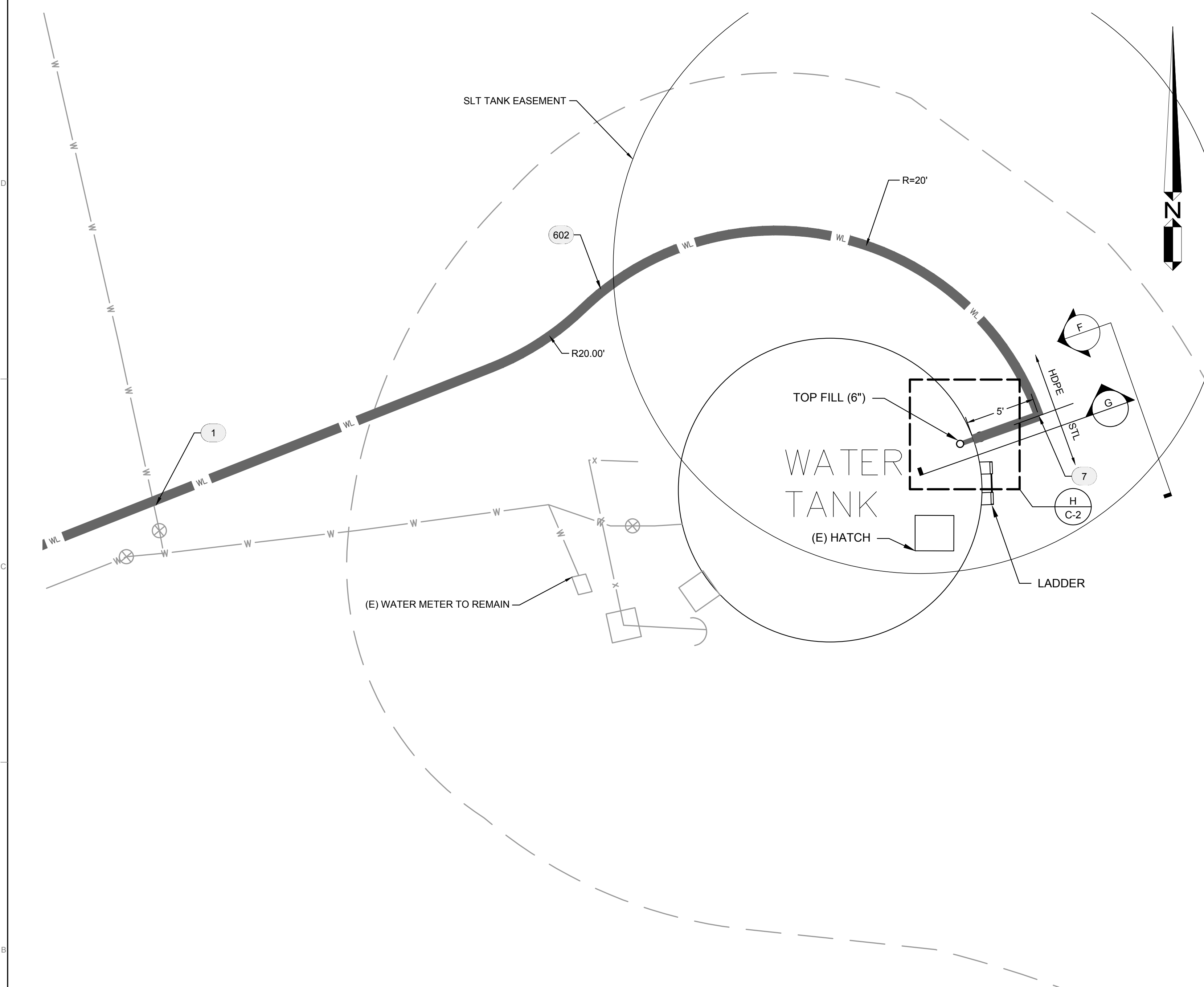
TRENCH DRAIN PLUG NOTES:	
1	TRENCH PLUG, 2-SACK SAND CEMENT SLURRY, EMBED 18" BEYOND VERTICAL TRENCH CUT, 18" BELOW TRENCH BOTTOM, TERMINATE 12" ABOVE TOP PIPE. SPACE TRENCH PLUG 50' ALONG PIPE ROUTE WITHIN INTERVAL SHOWN ON PLANS.
2	GRAVEL PLUG WRAPPED IN GEOTEXTILE FABRIC, MIRAFI NC OR APPROVED EQUAL, NEEDLE PUNCHED NON WOVEN GEOTEXTILE COMPOSED OF POLYPROPYLENE FIBERS. GRAVEL PLUG SHALL BE 12" THICK AND MATCH HEIGHT OF TRENCH PLUG. PLACE AGAINST TRENCH PLUG WALL AS SHOWN.
3	1" PVC PERFORATED PIPE, PLACED AT BOTTOM OF TRENCH, ENTIRE WIDTH OF TRENCH.
4	ATTACH 1" PVC SOLID PIPE TO END OF PERFORATED PIPE, EXTEND THROUGH TRENCH PLUG DOWNSLOPE AND DAYLIGHT PIPE TO EXIST. GRADE.



**D TRENCH DRAIN SECTION**

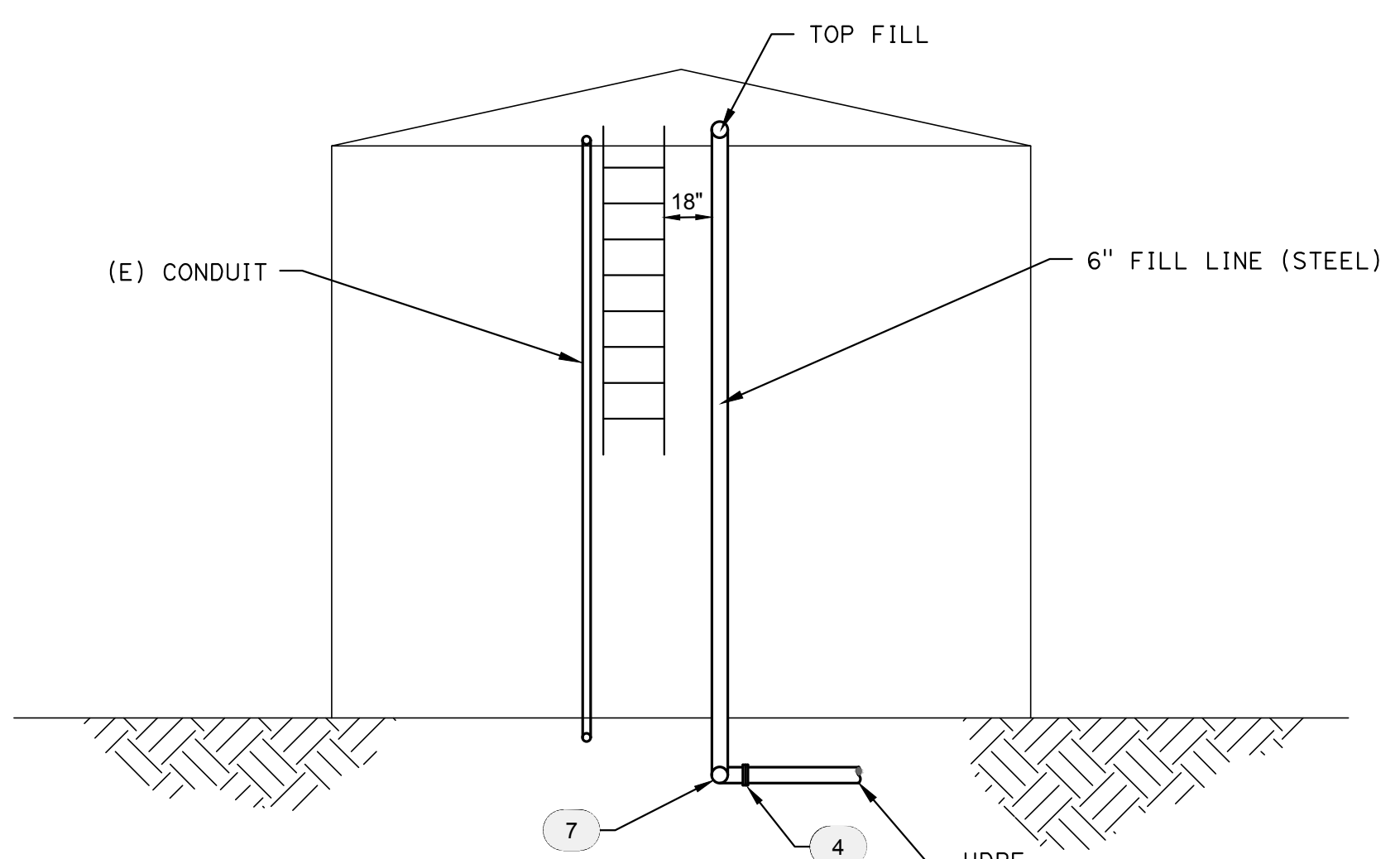
Scale: NTS





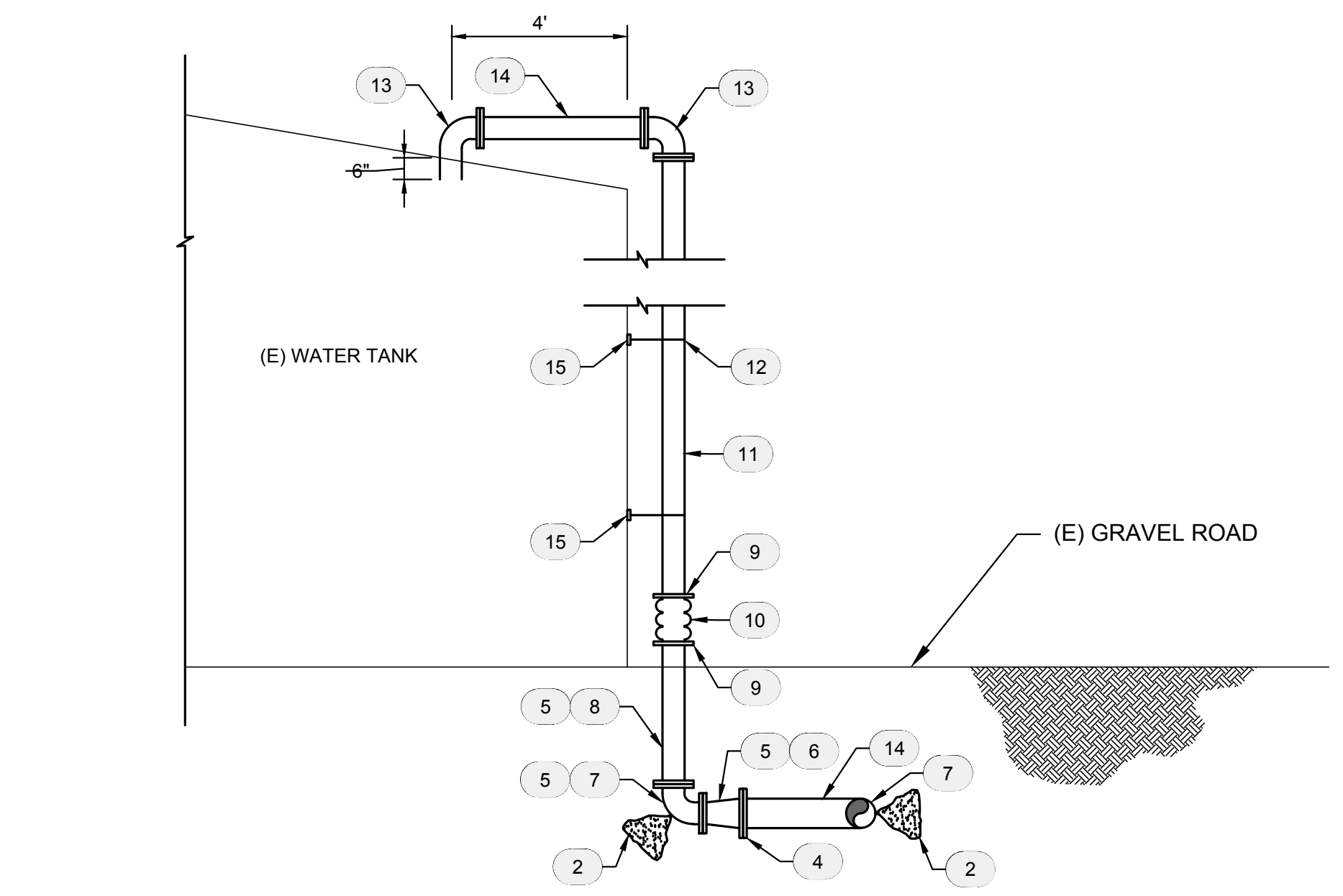
F TANK CONNECTION PLAN

Scale: 1" = 5'



G TANK CONNECTION PROFILE

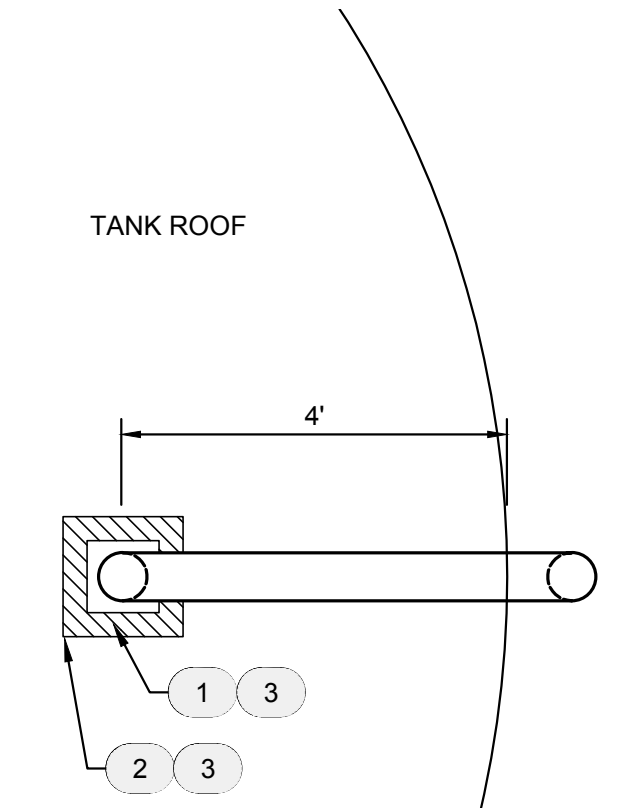
Scale: 1" = 5'



H TANK CONNECTION DETAIL

Scale: NTS

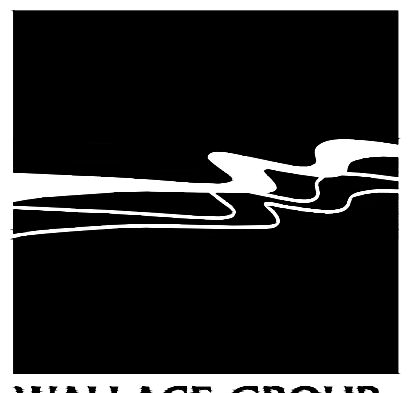
TANK CONNECTION PLAN NOTES:	
1	NEW 8 INCH HDPE PIPELINE TO CLEAR BELOW EXISTING 6 INCH WATER MAIN BY MIN. 12 INCHES, OUTSIDE PIPE WALL TO OUTSIDE PIPE WALL.
2	THRUST BLOCK PER COUNTY STD. DETAIL W-1, DETAL J/SHEET C-3.
3	8 INCH DIAMETER DR 11 (PRESSURE CLASS 200 PSI) HDPE PRESSURE PIPE, THERMAL BUTT-FUSION WELDED JOINTS. PROVIDE BLUE STRIPE PIPE TO DESIGNATE POTABLE WATER SERVICE. SEE SPEC. SECT. 33 11 00.
4	FLANGED COUPLING ADAPTER
5	STEEL PIPE PER COUNTY OF SAN LUIS OBISPO STD. 6.2.1.A.2. PIPE PRESSURE CLASS/WORKING PRESSURE SHALL BE 200 PSI. STEEL PIPE SHALL BE CEMENT MORTAR LINED PER AWWA C205, CEMENT TYPE II, COATED PER SPEC. SECT. 09 97 00.
6	8 X 6 STL ECCENTRIC REDUCER, FLG X FLG, DIELECTRIC TAPE WRAP, PASCO 10 MIL PVC PLASTIC TAPE, OR APPROVED EQUAL.
7	90 DEGREE STL FITTING, FLG. X FLG., DIELECTRIC TAPE WRAP, PASCO 10 MIL PVC PLASTIC TAPE, OR APPROVED EQUAL.
8	STEEL PIPE SPOOL, FLG. X FLG., DIELECTRIC TAPE WRAP, PASCO 10 MIL PVC PLASTIC TAPE, OR APPROVED EQUAL.
9	DIELECTRIC FLANGE INSULATION KIT IF REQ'D, SEE SPEC. SECT. 33 11 00.
10	6 INCH DIAMETER EPDM TRIPLE ARCH EXPANSION JOINT, FLEXI-CRAFT OR APPROVED EQUAL. SEE SPEC. SECT. 33 11 00.
11	STEEL PIPE SPOOL, FLG. X FLG., COATED PER SPEC. SECT. 09 97 00.
12	PIPE SUPPORTS, ATTACH TO EXISTING TANK PER SPEC. SECT. 33 16 13.
13	90 DEGREE STL FITTING, FLG. X FLG., COATED PER SPEC. SECT. 09 97 00.
14	STEEL PIPE SPOOL, FLG. X FLG., COATED PER SPEC. SECT. 09 97 00.
15	FOR INTERIOR TANK COATING REPAIR AND PIPE SUPPORT ATACHMENT, SEE SPEC. SECT. 33 16 13.



I TANK ROOF PENETRATION

Scale: NTS

TANK ROOF PENETRATION PLAN NOTES:	
1	CUT 9 INCH X 9 INCH SQUARE OPENING IN TOP OF TANK TO ACCOMMODATE PIPE PENETRATION. SEE SPEC. SECT. 33 16 13.
2	WELD ON 12 INCH X 12 INCH SQ STL PLATE WITH CENTERED OPENING FOR 6 INCH STL PIPE, WELD SEAL AROUND 6 INCH STL PIPE. RE-COAT ALL NEW STEEL SURFACES EXTERIOR AND INTERIOR TO TANK PER SPEC. SECT. 33 16 13.
3	FOR TANK WORK, ACCESS, TANK PREPARATION, DRAINING, DISINFECTING AND FILLING, SEE SPEC. SECT. 33 16 13 AND 33 13 00.



WALLACE GROUP®

CIVIL AND TRANSPORTATION ENGINEERING  
CONSTRUCTION MANAGEMENT  
LANDSCAPE ARCHITECTURE  
MECHANICAL ENGINEERING  
PLANNING  
PUBLIC WORKS ADMINISTRATION  
SURVEYING / GIS SOLUTIONS  
WATER RESOURCES

612 CLARION COURT  
SAN LUIS OBISPO, CA 93401  
T 805 544-4011 F 805 544-4294  
www.wallacegroup.us



SIGNATURE

DATE SIGNED

These plans and specifications, and the ideas and design incorporated herein, are instruments of service prepared for the construction of work shown hereon and shall not be used in whole or in part for any other project without written authority of Wallace Group, a California Corporation.  
Copyright © 2017 Wallace Group, a California Corporation. All rights reserved. Copies of this drawing shall have this notice.

SAN MIGUEL CSD  
SLT WELL BLENDING PIPELINE  
DETAILS - 2

JOB #: 0406-0030  
DESIGNERS: SGT  
DRAWN BY: MJH  
DATE: 02/2017

DRAWING NO.  
C-2  
6 OF 7 SHEETS

