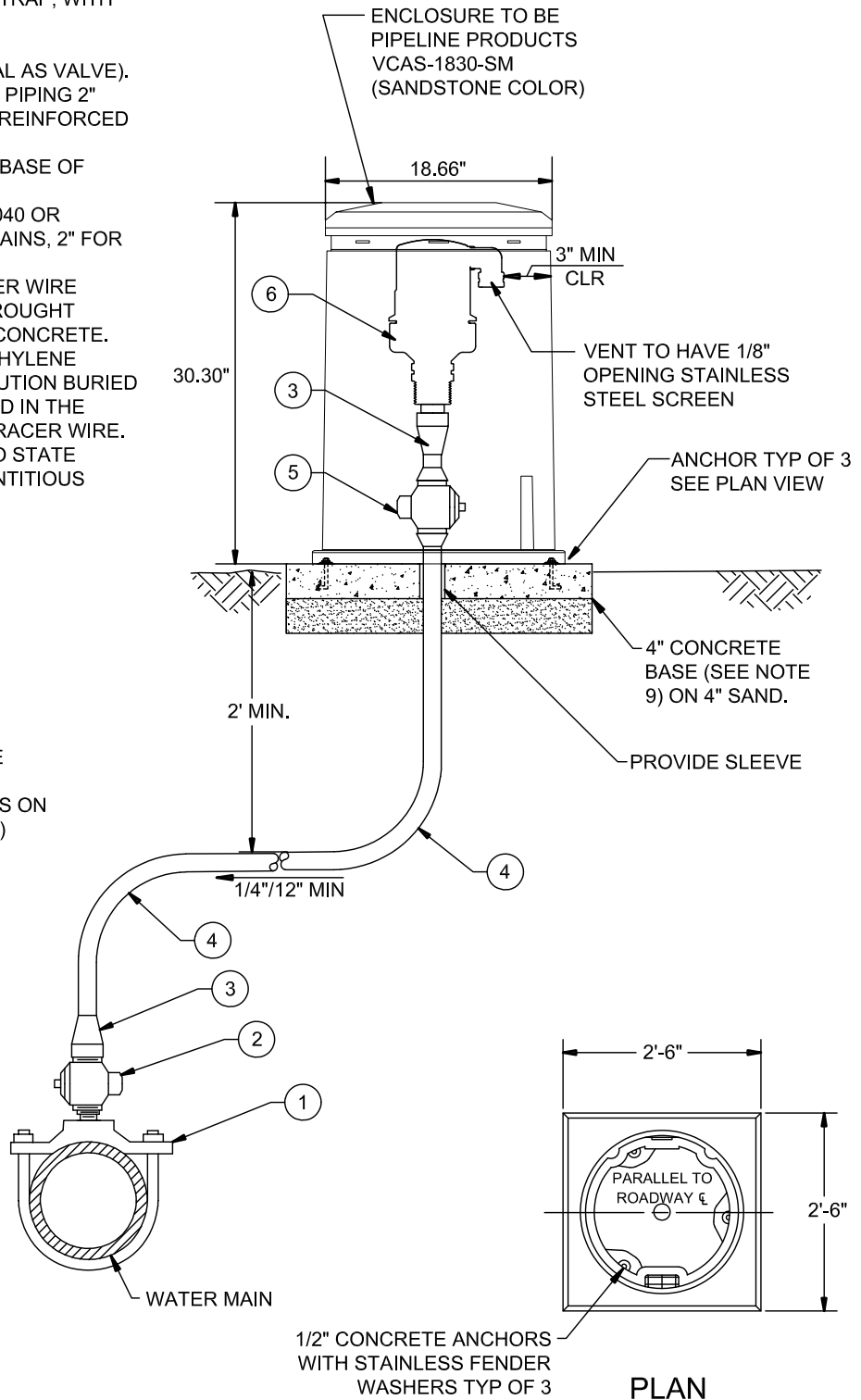


NOTES:

1. BRONZE SERVICE SADDLE, DOUBLE STRAP, WITH AWWA I.P. THREADS.
2. CORPORATION STOP w/ I.P. THREADS.
3. COUPLING OR NIPPLE (SAME MATERIAL AS VALVE).
4. 1" PIPING TO BE POLYETHYLENE I.P.S. PIPING 2" AND ABOVE TO BE SCH. 80 PVC WITH REINFORCED FITTINGS.
5. BRASS BALL VALVE (MIN 2" BETWEEN BASE OF VALVE AND CONCRETE).
6. AIR & VACUUM RELIEF VALVE A.R.I D-040 OR APPROVED EQUAL. 1" FOR UP TO 4" MAINS, 2" FOR 6-12" MAINS.
7. 14-GAUGE INSULATED COPPER TRACER WIRE SHALL BE TAPED TO THE PIPE AND BROUGHT ABOVE GRADE THROUGH SLEEVE IN CONCRETE. COLOR CODED BLUE 3" WIDE POLYETHYLENE NON-DETECTABLE TAPE MARKED "CAUTION BURIED WATER LINE BELOW" SHALL BE BURIED IN THE TRENCH AND ABOVE THE PIPE AND TRACER WIRE.
9. CONCRETE BASE SHALL CONFORM TO STATE STANDARD 90-1.01, 565 LBS/CY CEMENTITIOUS MATERIAL [6 SACK].

NOTE: ALL MATERIALS MUST BE NSF CERTIFIED.  
 ALL CONNECTING MATERIALS MUST BE SIMILAR, EXCEPT FOR METALS CONNECTING TO PLASTICS (I.E. - BRASS ON BRASS/STAINLESS ON STAINLESS ETC.)

NOTE: SECURELY ATTACH 14-GAUGE MIN. COPPER WIRE TO CORP. STOP, RUN PARALLEL WITH PIPE & ATTACH TO ANGLE STOP.



**SAN MIGUEL COMMUNITY SERVICES DISTRICT**  
**STANDARD DRAWINGS**  
**WATERLINE**  
**AIR & VACUUM RELIEF ASSEMBLY**

Issued: <b>June 2020</b>	Scale: <b>NTS</b>
Revised:	Revision No:
Drawing No:	<b>W-6</b>